



THE LLC IN MAY: EXPLORATIONS 2024

OVERVIEW

As most of you know, May is not part of the regular fall and spring membership. In the past we have used it for minicourses. This year we are trying something new for May, a design including special events, minicourses, and off-site LLC gatherings. These are things we might not be able to do during the academic year. Each event will ask you to sign up just for that event, and each will have its own cost. You do not need to be a member to participate in any of these events. Consider signing up with a friend or neighbor or family member, to let them experience the LLC! Registration will be in person or by phone only (**614-823-1650**), NO ONLINE ORDERS.

Cash, check and credit cards accepted.

This year our 'explorations' will take you from Westerville to the Himalayas, from the Japanese site of an Italian opera to the scientific discoveries that have unpacked the atom and measured the expanding universe. And if possible, we hope to also offer a June day trip, exploring Ohio.

On May 7, 1-3:30, Janice Glowski will introduce us to Himalayan art in its historical and cultural context and give us the background needed to 'see' and understand the art from a traveling show, visiting Otterbein in the fall, from the Rubin Museum in New York. We are one of five universities to host this exhibition. Art as a traveling, educational encounter is the next step art museums are taking to make their collections more widely available and understood. And, as those of you who have been in the film series know, 'seeing' can benefit from guidance.

On May 9 and 13, Lyle and Meg Barkhymer will introduce us to Puccini's opera *Madama Butterfly*, one of opera's "top ten" and help us discuss it. **On May 11th**, the Metropolitan Opera will broadcast their performance to movie theaters across the country and in Columbus; the Barkhymeres will introduce us to the opera on the 9th, attend the opera with us, and lead our discussion of what we have seen on the 13th. This exploration is intended for a wide audience, from novice to experienced: that includes anyone who has never seen an opera, who is not convinced he or she would enjoy and opera, and who might even be a bit afraid of opera! *Madama Butterfly*, sung in Italian with English subtitles, will appeal to all.

The very small and the very large: the universe and the atom. On the mornings of **May 13-17**, Dave Robertson, chair of the Physics department at Otterbein, will lead us in a week-long minicourse, taking us on a historical tour of modern physics, exploring our most basic understanding of the natural world. We have lived through a century which transformed that understanding. Whether you think about your cellphone and its use of GPS, or your MRI or xray, digital electronics, information technology, lasers, energy technology (nuclear, solar,...), medical imaging and treatments, superconductors, advanced materials, or space exploration, it is science's capacity to unpack the natural world that has made these discoveries possible. This minicourse has no prerequisites, only your own curiosity; it is not a course for majors, it is an exploration for the LLC. Dave Robertson was Otterbein's Master Teacher of the Year in 2017.

Exploring Westerville with the LLC. **May 21**, at Westerville's new COhatch facility, in the renovated armory at 240 S. State St. We will have a tour followed by social time at the North High Brewery next door. Enjoy your choice of libations and a last chance to gather with the LLC before summer break!

The arts as a gateway to the Himalayas (Tibet, Nepal, and Bhutan)



May 7, Tuesday, 1:00-3:30 pm, The Point, room 140

We cannot take you all the way around the globe to encounter the culture, religions, and history of the Himalayas, but we can offer LLC members the chance to explore that world through understanding its art.

Join Janice Glowski, Otterbein's Frank Museum of Art and Galleries Director, for an afternoon exploring Himalayan art and its historical and cultural context. A special exhibition of Himalayan Art curated by The Rubin Museum in New York from their permanent collection will be on

Otterbein's campus in Fall 2024. The exhibition is part of the Rubin Museum's nationwide educational project called Project Himalayan Art. This session will give LLC participants a framework for understanding this art, materials to read over the summer, and ways to bring a deeper understanding of the art with them when viewing the fall shows. This also is the first step in other fall opportunities, when Glowski will welcome LLC participants to class sessions dedicated to Asian art. Dr. Glowski is one of Otterbein's exceptional teachers; her own PhD dissertation research focused on Himalayan art and culture.

Dr. Janice Glowski is the director of The Frank Museum of Art and Galleries at Otterbein, where she also teaches art history and visual culture and museum and curatorial studies. She co-founded *Otterbein and the Arts: Opening Doors to the World* (ODW), a contemporary arts program and publication series, which has received funding from the National Endowment for the Arts (NEH), the Ohio Arts Council (OAC), University sources, and private donors. She curates contemporary art exhibitions across disciplines and has contributed scholarship to several international exhibition catalogs. In addition to museum-related work, Glowski researches, presents, and publishes on South Asian and Himalayan art.

Encountering Opera: Puccini's "Madama Butterfly"



Thursday, May 9, 1:30 – 3:00 pm, The Point, room 140

Saturday, May 11, 12:55 - 4 pm, The Met Live in HD Performance, ticket required*

Monday, May 13, 1:30 – 3:00 pm, The Point, room 140

This LLC "May Exploration" is intended for a wide audience from novice to experienced. That includes anyone who has never seen an opera, who is not convinced he or she would enjoy an opera, and who might even be a bit afraid of opera. We believe this "Madama Butterfly," sung in Italian with English subtitles, will appeal to all.

Thursday, May 9, 1:30 – 3:00 The Point, room 140

Madama Butterfly is one of opera's most enduring tales of unrequited love. Puccini's poignant score follows the tragic tale of Cio Cio San, a young Japanese girl who falls in love with American naval officer Pinkerton, with devastating consequences. (*English National Opera*). In the world of opera, Giacomo Puccini is among the three most performed composers of all time, and his "Madama Butterfly" is among the top ten operas. The tragic tale has filled the seats of opera houses around the world for a century and a quarter. At the Met alone there have been 881 performances of five different productions. It has been unusual for a season to go by without performances of Madama Butterfly.

Stage director Anthony Mingella's visually stunning and sensitive production is a compelling mixture of traditional and modern creative choices, able to lend beauty as well as meaning to the unfolding story. (*OperaWire*). The most surprising, and many think most effective, innovation in the production is the use of traditional Japanese puppet theater called "bunraku" in the final scene.

Saturday, May 11, 12:55 p.m. - 4 p.m. Marcus Crosswoods or Polaris 18 Cinemas

"Madama Butterfly"

*Adults \$25, Seniors \$23. Tickets available in advance online.

12:55 pm (3 hours 15 minutes with one intermission). *The intermission features take us backstage at the Met to watch sets coming together and to hear live interviews with members of the cast.*

[The Met Live in HD in Cinemas Season 2024](https://www.metopera.org/season/in-cinemas/?gad_source=1&gclid=Cj0KCQiA1rSsBhDHARIsANB4EJaO7St1Gebwy5v7j1TQYAhU6w2NdJYdNWe7uzgi85BLcpGEQ4obVYwaAqZZEALw_wcB&gclidsrc=aw.ds)

(Click on this link. Then scroll down and click on “Madama Butterfly” for more information.)

Or, copy this address into your browser.

https://www.metopera.org/season/in-cinemas/?gad_source=1&gclid=Cj0KCQiA1rSsBhDHARIsANB4EJaO7St1Gebwy5v7j1TQYAhU6w2NdJYdNWe7uzgi85BLcpGEQ4obVYwaAqZZEALw_wcB&gclidsrc=aw.ds

Marcus Crosswoods Cinema 17 (Worthington) The Barkhymers will attend at this location
200 Hutchinson Ave, Columbus, OH 43235

Polaris 18
1071 Gemini Pl, Columbus, OH 43240

Monday, May 13, 1:30 – 3:00 The Point, room 140

In this discussion-focused session today, we will have a chance to reflect on and share thoughts about Saturday’s opera experience and for us to answer your questions. Topics will be wide ranging, including this Met Live in HD performance, Puccini and his world, and opera in general.

In closing we will present some information about directions that opera has taken since Puccini’s “Madama Butterfly,” including trends in opera production and some pieces that have appeared on the stage in most recent years.

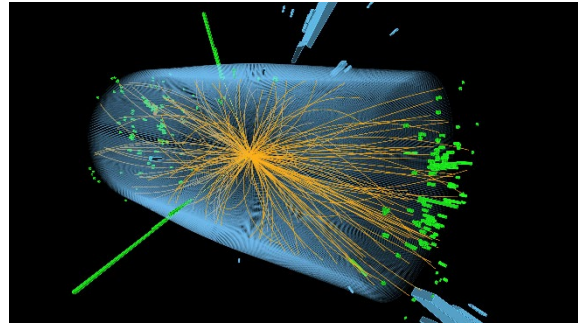
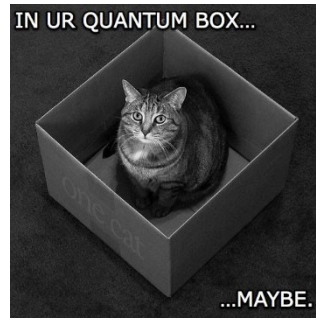
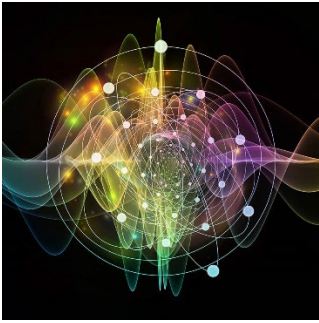
There will be handouts for further reading and suggestions for experiencing opera again.

Dr. Lyle Barkhymer is an Otterbein alumnus and professor emeritus who completed master’s and doctor’s degrees at the School of Music at Indiana University, Bloomington. He returned to his alma mater to join the faculty of the Department of Music in 1967. Dr. Barkhymer’s fascination for opera developed during four years of a summer job at the Chautauqua Institution in his college years. After washing hotel dining room dishes, scrubbing floors, or carrying suitcases, in the evening he ushered for twenty-four different opera productions in exchange for free admission. During his graduate studies at Indiana University, Bloomington, well known for its outstanding opera program, he played frequently in opera orchestras. Performing in the Columbus Symphony for 30 years, he played in the orchestra pit for all the Opera Columbus productions and enjoyed being in costume on stage twice in the “band” that appears in the final scene of Mozart’s “Don Giovanni.”

Meg Barkhymer's early interest in music was nurtured as a participant in the excellent public school music program in Parma, Ohio, and as a violinist in Ohio regional and state high school orchestras. She earned a BA in music from Otterbein and has been a leader in the violin section of the Westerville Symphony Orchestra since its inception in the 1970s.

Opera has long been one of her favorite genres. Fascinated by the “behind the scenes” world of opera she encountered as a participant in an Opera Production course at the College of Wooster in 1966, her interest in opera grew as she performed in many opera orchestras at Otterbein and Ohio State University. Among her favorite opera orchestra experiences were playing for *Così fan Tutti*, *Marriage of Figaro*, *Hansel and Gretel*, *Magic Flute*, *The Merry Widow* and *Madama Butterfly*.

The very small and the very large: the universe and the atom: Physics' Exploration of the Natural World



Monday - Friday, May 13-17, 10 am - noon, The Point, room 140

Those of you who came to this fall's presentation on energy know that you can expect the unexpected, the chance to understand something you did not understand when you came into the room!

In the May minicourse we will take a tour of modern physics, exploring our most basic understanding of the natural world. We have lived through a century which transformed that understanding. Whether you think about your cellphone and its use of GPS, or your MRI or Xrays, digital electronics, information technology, lasers, energy technology (nuclear, solar, ...), medical imaging and treatments, superconductors, advanced materials, or space exploration, it is science's capacity to unpack the natural world that has made these discoveries possible.

The minicourse has no prerequisites, only your own curiosity. This is not 'Physics 101', nor is it a math course. It has been designed to offer LLC members a way to encounter the 'core theory' at which we have arrived; the most successful scientific theory of all time, encompassing phenomena on length scales from about 1/1000 the size of a proton up to the entire observable universe – a range of roughly 45 orders of magnitude (powers of ten). The description is of unprecedented accuracy, with some predictions and experiments agreeing to better than one part in a trillion, and no confirmed discrepancies. It is also mathematically economical and coherent. Indeed, as our knowledge has progressed, we have consistently understood more and more in terms of fewer and fewer basic principles. This may someday lead us to a single "theory of everything," though it is clear that we are not there yet, for reasons we will discuss.

The opening day will be a historical survey of efforts to understand the world from ancient times to the birth of science and physics in its modern form in the time of Galileo and Newton. We will then sketch the development of physics up to about 1900. This is the "classical" period, and we will discuss the essential laws, concepts, and terminology that are necessary for our later journey.

The bedrock on which our modern understanding is based are the twin revolutions of the early 20th century: relativity (day two) and quantum theory (day three). Relativity is a theory of space and time, in which space and time are unified in an elegant geometrical structure; they are also *dynamical*, that is, they can evolve and change their shape. This dynamical space-time is how we understand gravity today. Quantum theory is the framework in which matter and all other fundamental interactions are understood. It is very strange and raises profound conceptual questions about the nature of reality itself that are still under debate.

In day four we discuss particle physics and answer the question, “what is the world made of?” This part of the core theory, known as the Standard Model, was established in the 1970s and it has (so far!) passed every experimental test. It is a quantum theory based on elegant principles of symmetry.

Finally, in day five we treat cosmology, the study of the universe as a whole. Here again there is a standard model that describes the evolution of the universe from very soon after a “big bang” about 14 billion years ago to the present, with many precise predictions that are matched by observations. There is also a deep connection to particle physics, a profound linkage between the very small and the very large.

We will certainly discuss open questions and the features of the core theory that convince us it cannot be the final theory of everything. But we will not really discuss speculative ideas that may (or may not!) be elements in a deeper theory of physics, like string theory, extra dimensions, etc. Everything we consider will be absolutely uncontroversial, established science – structures and concepts that *any* future theory of physics will have to incorporate and be consistent with.

Dr. David Robertson earned a BS in physics from UCLA (with honors) and a Ph.D. in physics from the University of California, Santa Barbara, where he worked under Nobel laureate Frank Wilczek. He held postdoctoral appointments at Southern Methodist University and the Superconducting Supercollider Laboratory, Ohio State University, and North Carolina State University, and worked at the Ohio Supercomputer Center before joining the Otterbein faculty in 2002. He teaches courses throughout the physics curriculum as well as in the INST, FYS, and Honors programs. He was chair of the physics department for 12 years, helping to build its reputation for research-based teaching and student-faculty research. He has also served as director of Undergraduate Research and Creative Work. In 2017 he was named Otterbein’s Master Teacher of the Year.

Exploring Westerville with the LLC



May 21, 2-4 pm

Learn, discover, socialize in a new location in Westerville. We will tour the COhatch facility in the renovated armory at 240 S. State St., followed by a tour and social time at the North High Brewery next door. Your ticket gets you one beverage of your choice. A second libation or any food is on your own while enjoying a last chance to gather with the LLC before the summer break. The tour has a maximum number of attendees, sign up early. There is a parking lot behind COhatch and there are some on street parking spaces as well. Carpooling is encouraged.

May Explorations 2024 Order Form
Orders accepted at LLC events and by phone at 614-823-1650

| Class | Date | Time | Cost pp | Qty. | Total Cost |
|---|------------|-------------|--------------|------|------------|
| Opening Doors to the World | May 7 | 1-3:30 p.m. | \$10 | | |
| Encountering Opera* | May 9 & 11 | 1:30-3 p.m. | \$10 | | |
| The very small & the very large | May 13-17 | 10 am-Noon | \$50 | | |
| Tour COhatch & North High Brewery (includes drink ticket) | May 21 | 2-4 pm | \$10 | | |
| | | | Total | | |

* you buy your own ticket at the theatre of your choosing for the actual performance

Name _____

Guest Name _____

Email _____

Phone _____

Payment by: cash check _____ credit card

cc# _____

exp _____ cvc _____

Signature/Name on the card _____